



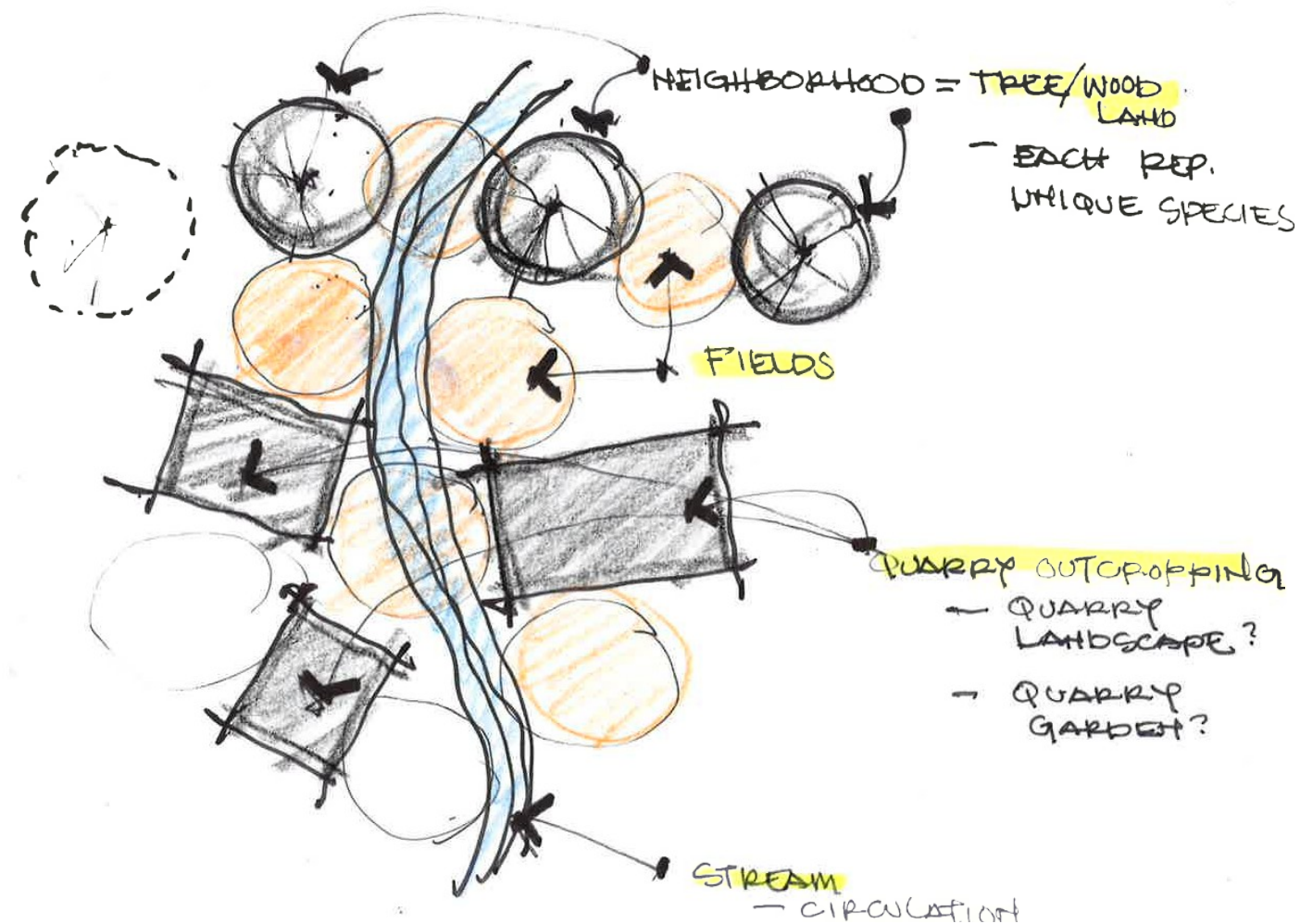
SAINT CLOUD TECH HIGH SCHOOL

DESIGN UPDATE 07.18.2017

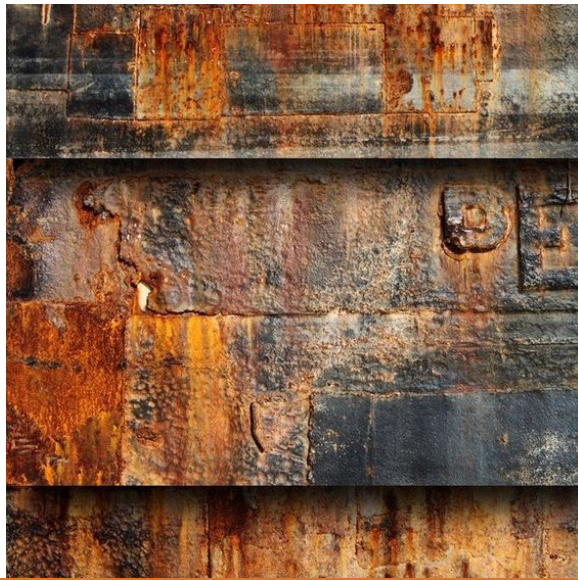


Design Concept

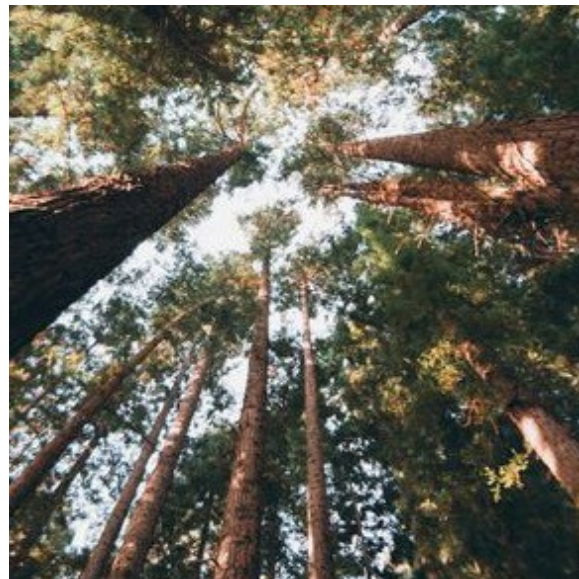
The design of St. Cloud Tech High School celebrates **Opportunity**. Opportunity for students, staff and the community to actively engage learning differently. To explore beyond the footprint of the building within an ever changing landscape. Using the landscape as inspiration, the new High School represents a journey through nature, both literal and figuratively. The experience begins at the entrance to the site, progressing through the woodland quarry landscape and across the creek before the High School becomes exposed. As students and visitors move through the school, the journey evokes a sense of discovery. Exposing students to different hands on and innovative experiences while always being connected to nature and the outdoors, extending the learning beyond the footprint of the building.



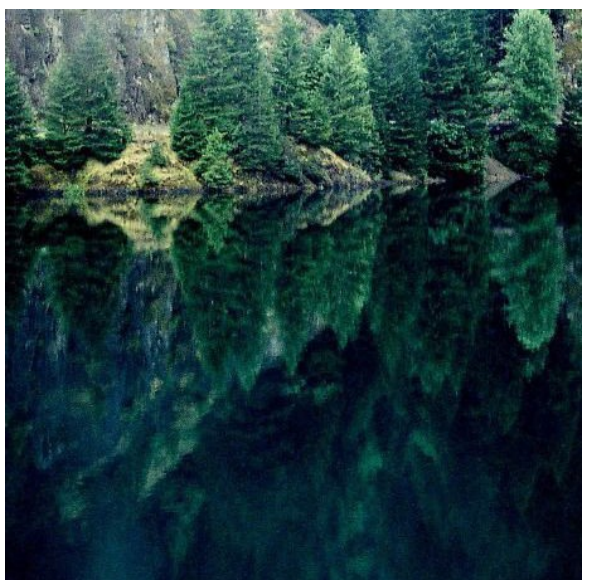
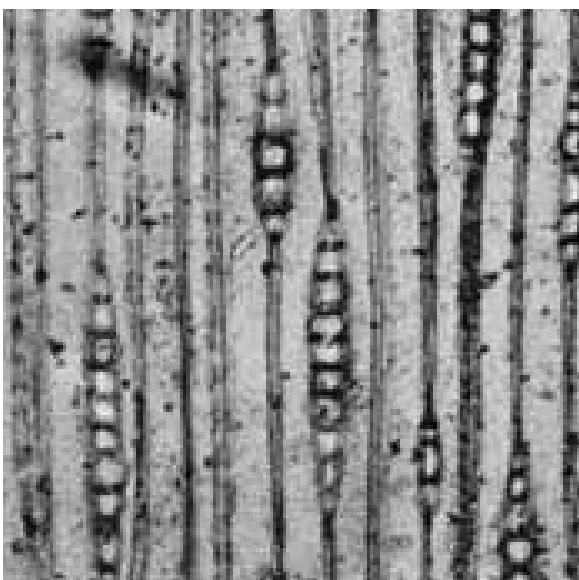
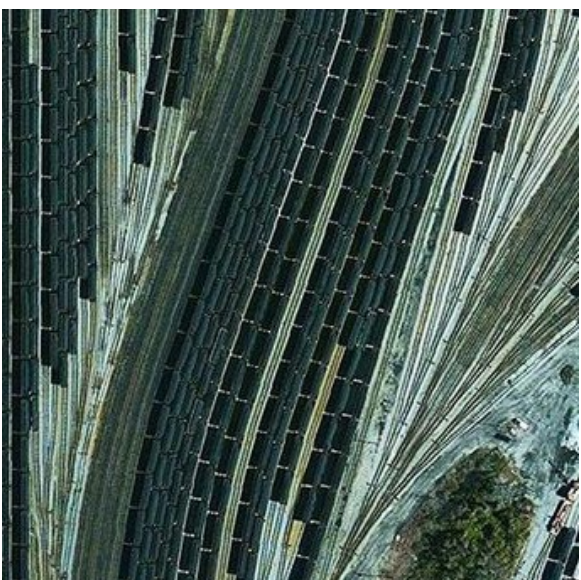
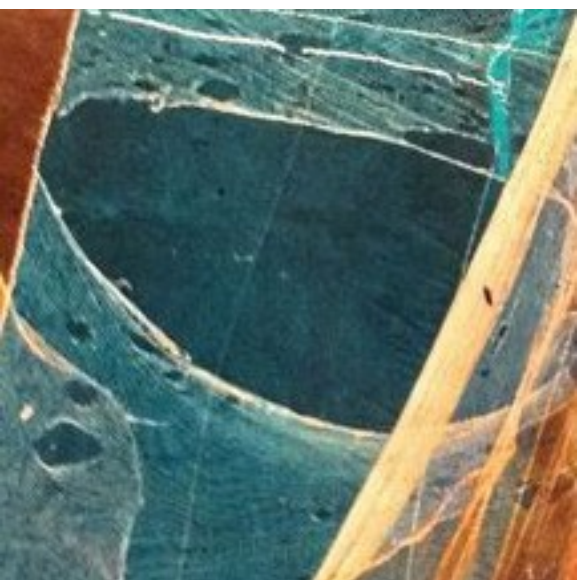
Woodland Quarry



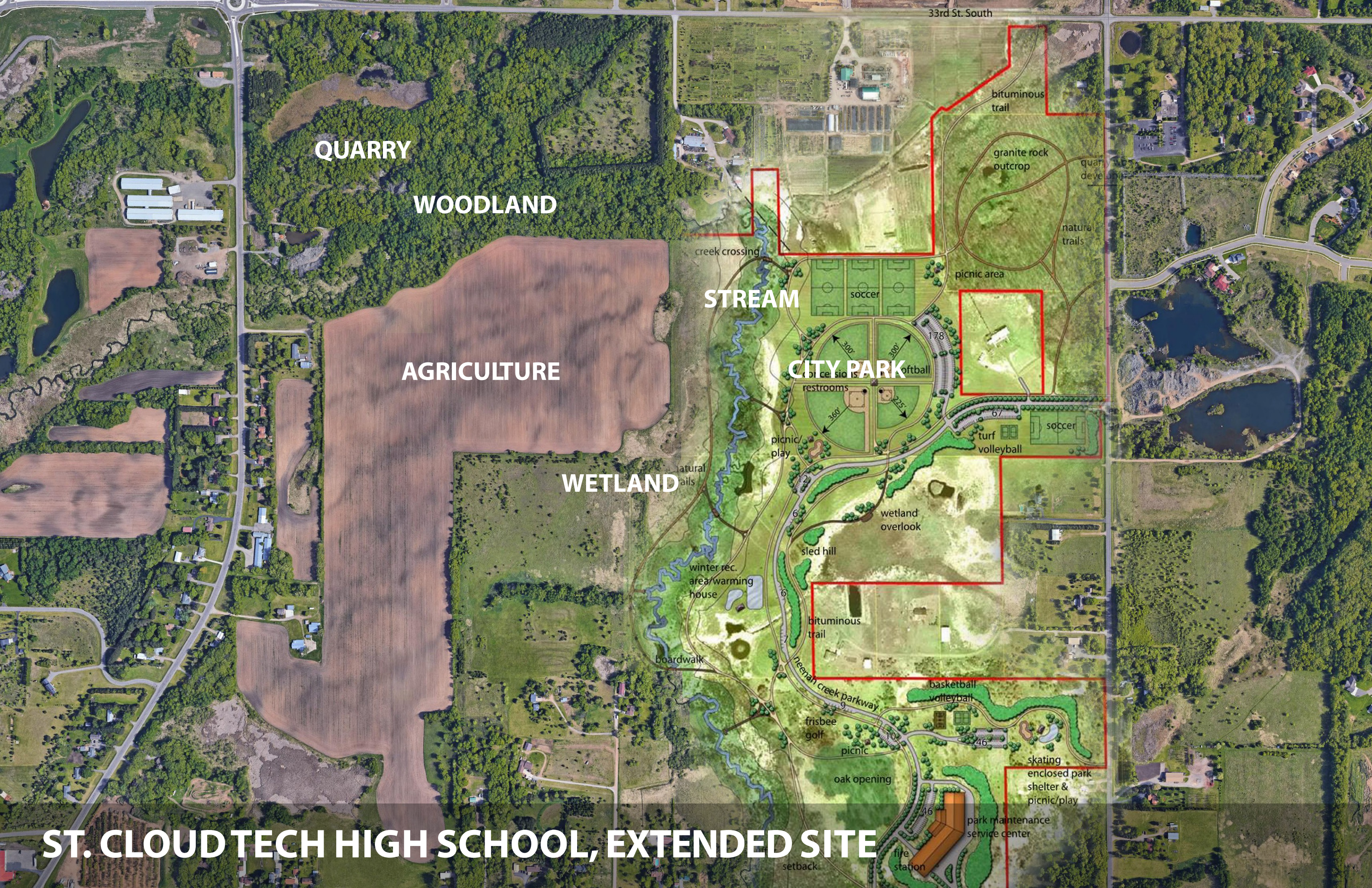
q u a r r y G A T H E R



f o r e s t L E A R N



s t r e a m C O N N E C T



QUARRY

WOODLAND

AGRICULTURE

WETLAND

STREAM

CITY PARK

33rd St. South

bituminous trail

granite rock outcrop

quarry development

natural trails

creek crossing

picnic area

soccer

178

300'

300'

225'

restrooms

picnic/play

360'

67

turf volleyball

soccer

natural trails

wetland overlook

sled hill

winter rec. area/warming house

boardwalk

bituminous trail

basketball volleyball

frisbee golf

picnic

oak opening

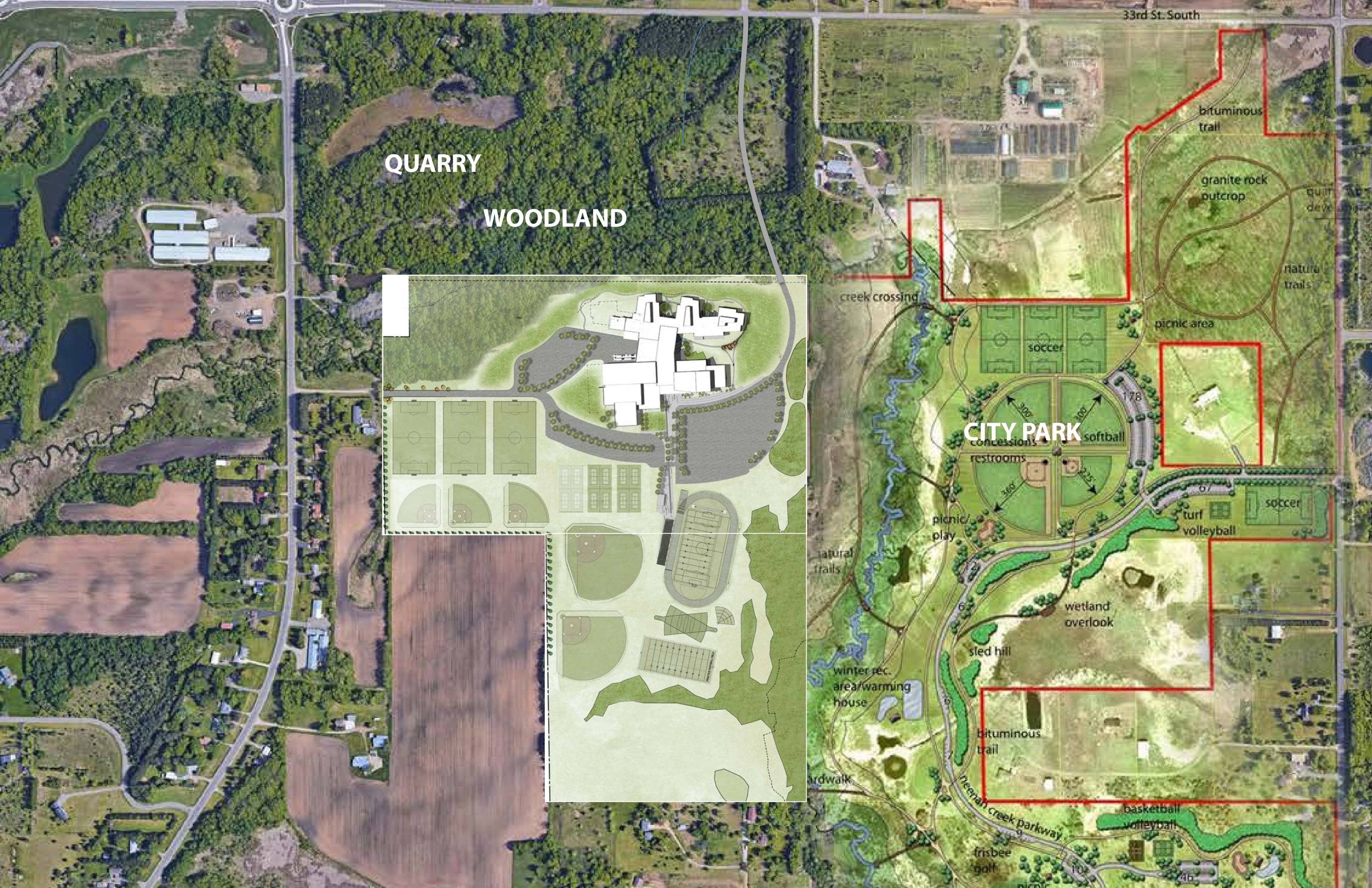
skating enclosed park shelter & picnic/play

park maintenance service center

fire station

setback

ST. CLOUD TECH HIGH SCHOOL, EXTENDED SITE



QUARRY

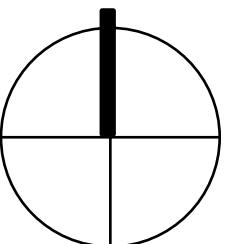
WOODLAND



CITY PARK

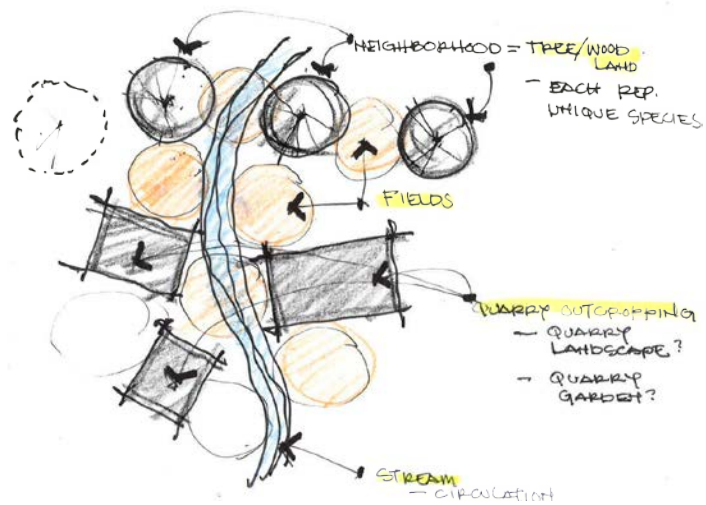
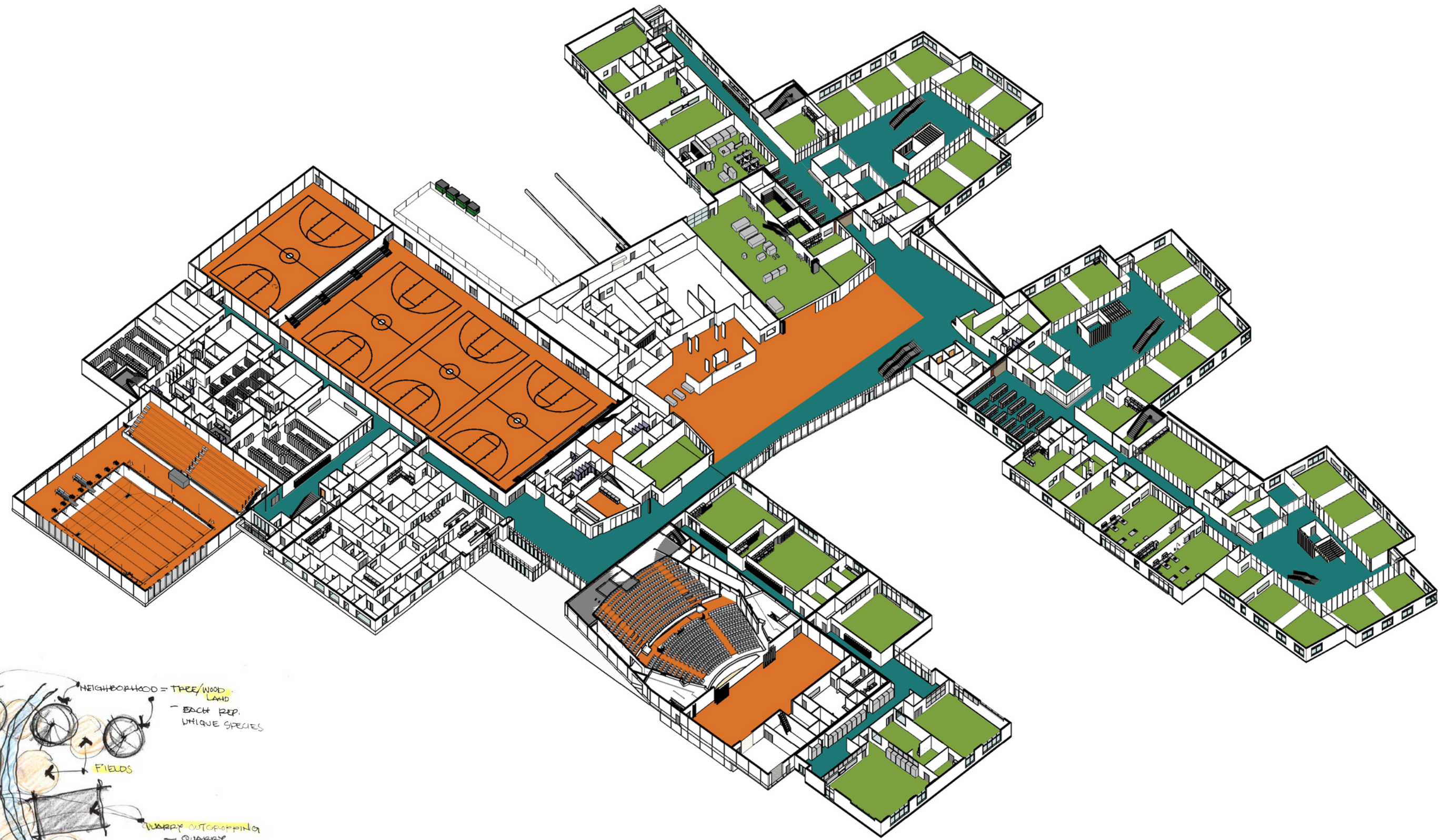


NORTH



SITE PLAN

- RAIN GARDENS
- STUDENT PARKING
- BUS DROP-OFF
- SOCCER FIELDS (3)
- TENNIS COURTS (8)
- SOFTBALL (2+1 FUTURE)
- VARSITY BASEBALL
- MULTI-PURPOSE STADIUM W/
TRACK
- JV BASEBALL
- PRACTICE FIELDS
- WETLANDS



FLOOR PLAN LEVEL ONE

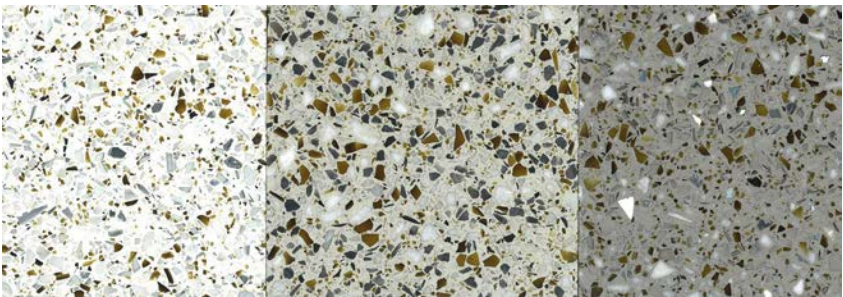
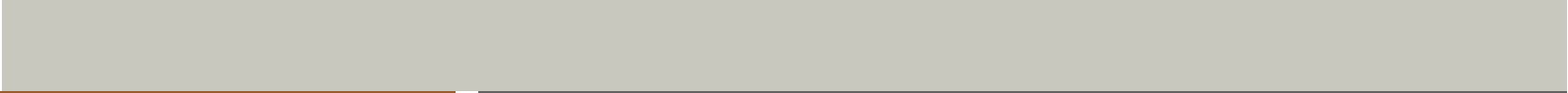
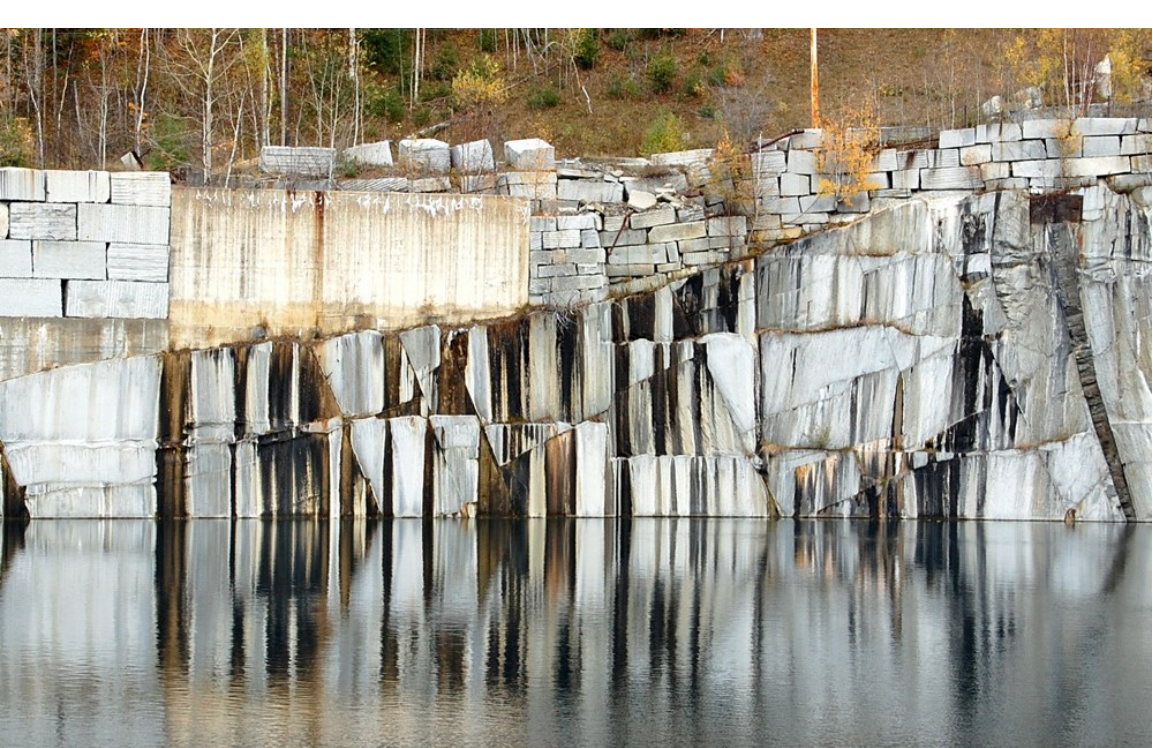
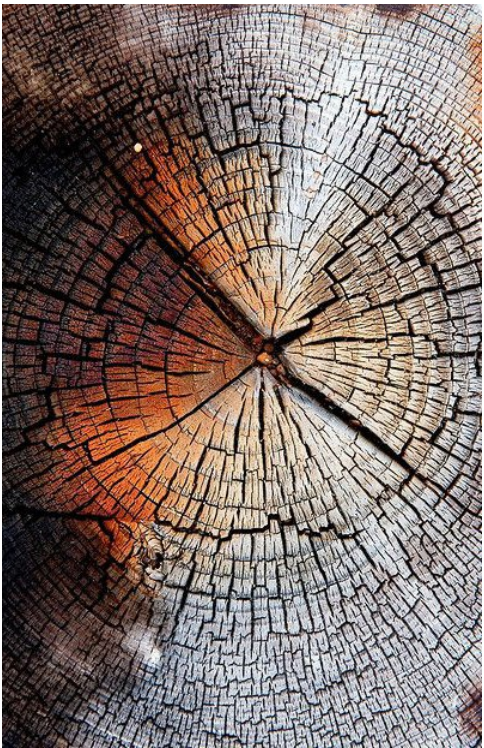
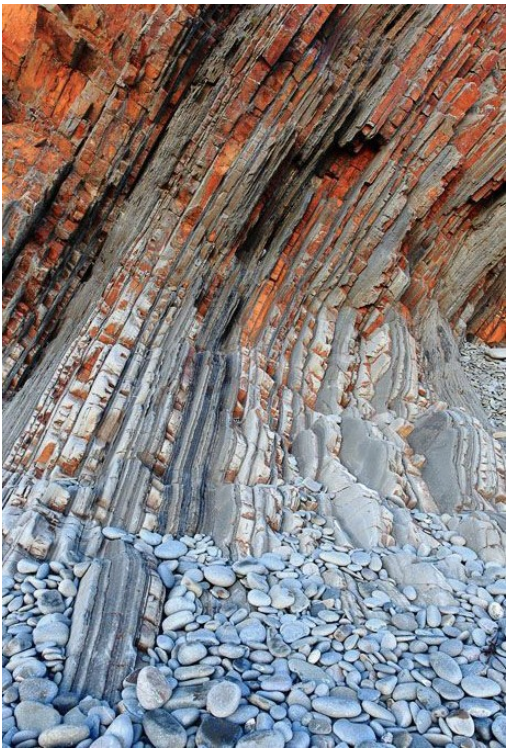


- Administration
- Art
- Building Support
- Circulation, Commons & Informal Learning
- General Learning
- Performing Arts
- Physical Education & Activities
- Restrooms
- Science
- Special Education
- Specialty Lab
- Storage

FLOOR PLAN LEVEL TWO



- Administration
- Art
- Building Support
- Circulation, Commons & Informal Learning
- General Learning
- Performing Arts
- Physical Education & Activities
- Restrooms
- Science
- Special Education
- Specialty Lab
- Storage



i n s p i r a t i o n —————>

M A T E R I A L I T Y



t h e C O M M O N S



***“I took a walk in the woods and
came out taller than the trees.”
-thoreau***

W I S D O M + A W A R E N E S S
an awareness of something larger

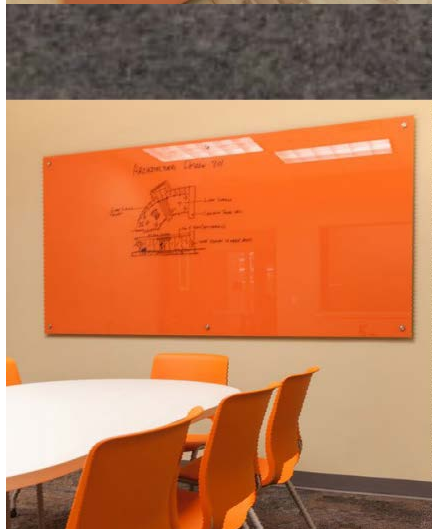
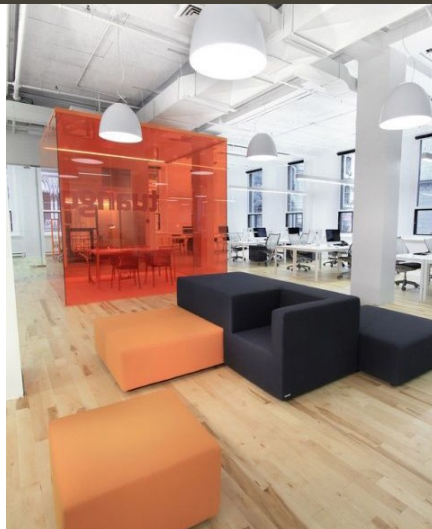
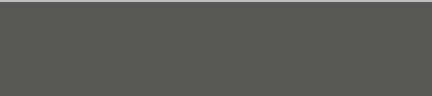
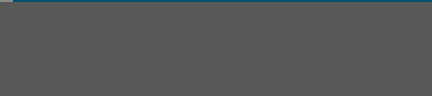
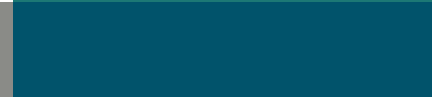
I N S P I R A T I O N
contemplation + self-reflection

C O N N E C T I O N
the feeling of belonging

A D V E N T U R E
the desire to learn, self-discovery

S H E L T E R
the feeling of safety + protection

Woodland Journey



i n s p i r a t i o n —————> M A T E R I A L I T Y



l e a r n i n g N E I G H B O R H O O D S

PERMITTING UPDATE

CUP/Permitting Update

Governing Body	Permit/App/ Submittal	Submission Date	Anticipated Approval Date	Status
Zoning Board of Appeals	Conditional Use Permit	4/28/2017	5/16/2017	Complete
Stearns Co., DNR, MPCA and others	Technical Evaluation Panel (TEP)	5/26/2017	6/14/2017	Complete
Stearns County	Wetland	5/26/2017	6/27/2017	Complete
DNR and Army Corp	Creek Crossing	5/26/2017	1/1/2018	Submitted - 90-120 review process- working to expedite
City of St. Cloud and DNR	Stormwater	5/26/2017	1/1/2018	Submitted - 90-120 review process- working to expedite
City of St. Cloud	Land Disturbance	8/1/2017	8/24/2017	Will be submitted as a part of Bid Pack #1
State of Minnesota	Utilities	7/14/2017	8/31/2017	In-Progress
MPCA	SWPPP	7/14/2017	8/14/2017	In-Progress
City of St. Cloud Planning	Plat	5/22/2017	6/13/2017	Complete
St. Cloud City Council	Plat/Subdivision Agreement	6/13/2017	July 10, 2017	Complete



THANK YOU!

